

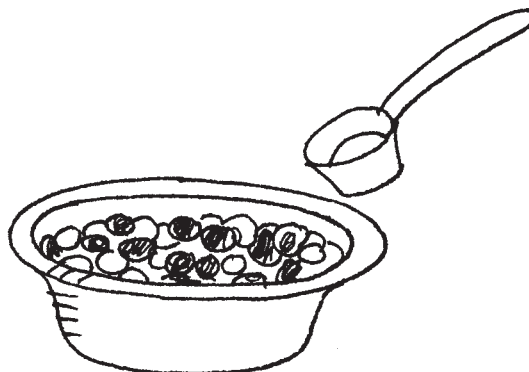
# Table of Contents

<b>Introduction</b> .....	<b>3</b>
How Do I Begin? • How Do I Implement the Center Activities? • How Do I Keep Track?	
<b>Addition</b> .....	<b>10</b>
Shake and Spill • Domino Addition • Bundle Addition • Place Value Addition	
<b>Calculators</b> .....	<b>19</b>
Tic-Tac-Toe • Sum Target • Calculator Race • Grocery Shopping	
<b>Division</b> .....	<b>29</b>
Sharing Cookies • Equal Teams • Division with Remainders	
<b>Estimating</b> .....	<b>36</b>
Estimation Jars • Estimating Area • Estimating Time	
<b>Fractions</b> .....	<b>43</b>
Pattern Block Fractions • Window Fractions • Sharing Pizza	
<b>Geometry</b> .....	<b>50</b>
Hexagon Cover-Up • Symmetrical Designs • Congruent Shapes	
<b>Graphing</b> .....	<b>56</b>
Bean Graph • Color Cube Graph • Student Survey • Graphing Bags	
<b>Logic</b> .....	<b>65</b>
Fill It In • Toothpick Puzzlers • Show the Ways	
<b>Measurement</b> .....	<b>72</b>
Different Shapes—Different Levels • Which Is More? • How Many Cubes? • Weighing a Pound • Lightest to Heaviest	
<b>Money</b> .....	<b>82</b>
How Many Ways? • Pay in Two Ways • Toy Store	
<b>Multiplication</b> .....	<b>89</b>
Equal Groups • Multiplication Designs • Multiplication Arrays • Under the Sea Multiplication	
<b>Place Value</b> .....	<b>99</b>
Building Numbers • Place Value Pictures • High Card	
<b>Probability</b> .....	<b>106</b>
Guess the Colors • Three-Color Cube • Heads or Tails	
<b>Subtraction</b> .....	<b>113</b>
Subtraction Sock • Dice Subtraction • Subtraction Designs • A Dollar to Spend	
<b>Time</b> .....	<b>122</b>
Showing Time • 30 Minutes Later • Keeping Track of Your Day	

# Bean Graph

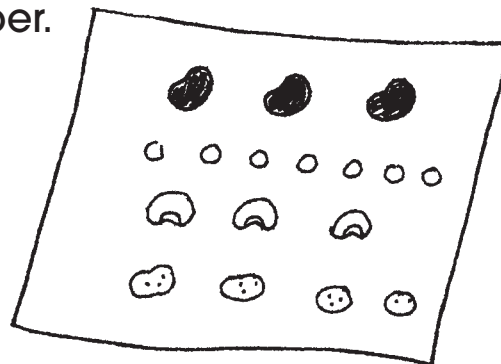
**1**

Take 1 scoop of beans from the bowl.



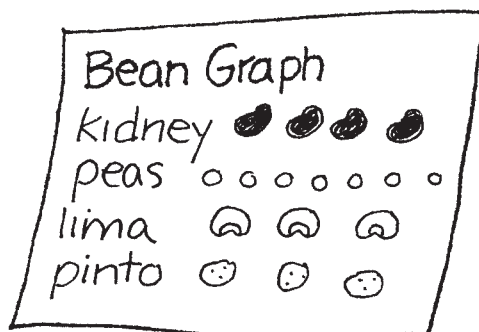
**2**

Sort the beans on construction paper.



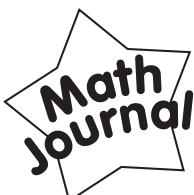
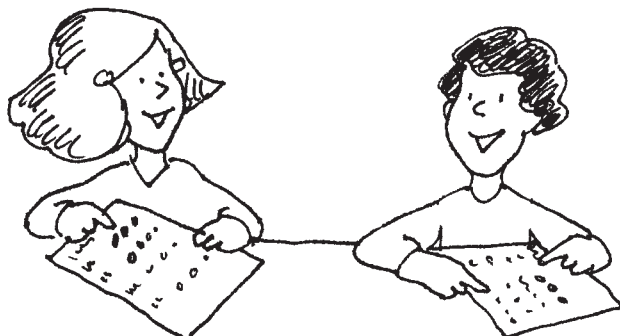
**3**

Glue the beans on the paper and label your graph.



**4**

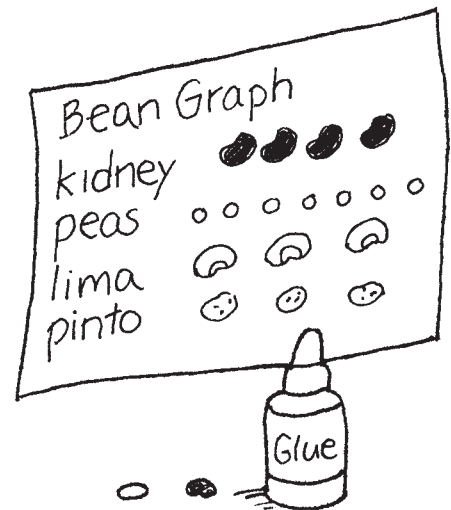
Compare your graph to a classmate's.




What information does your bean graph show? Write 4 or 5 facts about your graph on your journal page.

# Graphing

Graphing is a way to organize and analyze information. When students are involved in collecting and organizing the information, graphing experiences become more meaningful. These center activities help students begin with concrete graphs made with real objects and progress to picture graphs and symbolic graphs. Reading and summarizing the information displayed is an important final step.





**Materials**

- Bean Graph reproducibles (pages 57-58)
- 2-3 pkgs. mixed dried beans in a bowl
- chart paper
- small scoop
- construction paper
- glue

## Bean Graph


### Teaching Tips and Extensions

- ★ Label each type of bean on a chart, and place it at the center.
- If mixed beans are unavailable, purchase different kinds of beans and peas and mix them together.
- A small scoop used for measuring coffee or a 35-mm film canister works well.

## Color Cube Graph

### Teaching Tips and Extensions

- Although linking cubes are suggested, any small cubes or counters in a variety of colors may be used.
- The size of the cup you select will depend on the size of the manipulatives. Choose a cup that is large enough to select a representative sample of cubes.
- Use 1" (2.5 cm) graph paper instead of the Graph Paper reproducible (page 60).




**Materials**

- Color Cube Graph reproducibles (pages 59-60)
- small linking cubes in a box
- large cup for scooping the cubes
- crayons or markers

## Student Survey

### Teaching Tips and Extensions

- ★ Photocopy and cut apart a few sets of survey cards. Each student will use one card.
- Instead of sticky notes, students could use 1" (2.5 cm) squares of paper and glue them on the graph.




**Materials**

- Student Survey reproducibles (pages 61-62)
- small sticky notes
- construction paper
- index cards

## Graphing Bags

### Teaching Tips and Extensions

- ★ Place 20-25 objects for students to classify in each bag. Bags may contain different types of pasta, beans, shells, keys, buttons, and other small objects. Label each bag.
- Homework Idea: Ask students to make a graphing bag to add to the center.



**Materials**

- Graphing Bags reproducibles (pages 63-64 & 60)
- large assortment of small objects, mixed and bagged
- resealable plastic bags

